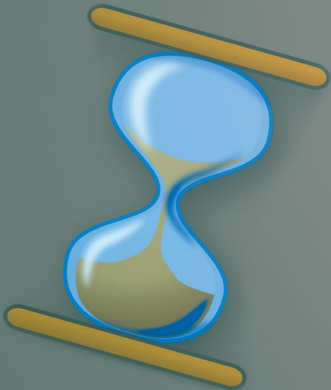


PERSON CENTERED PLANNING is a creative way of thinking and planning for the future and is not based on already existing programs.

PERSON CENTERED PLANNING works for people with disabilities of all ages. It is unlike any other planning that has been done! It focuses on interests and existing skills and is not dependent on what your son or daughter cannot do!

PERSON CENTERED PLANNING is done with and by the individual and family.



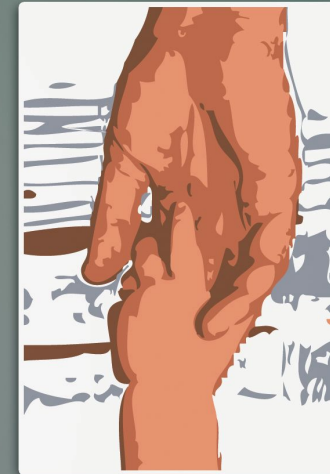
**It's never too early
and It's never too late
to begin planning.**

How can PERSON CENTERED PLANNING help my son or daughter?

The process provides direction and helps answer questions about your son or daughter's future.

- ★ How can I work with the school to maximize my child's potential?
- ★ What employment opportunities are possible?
- ★ Where can my son or daughter meet friends and socialize?
- ★ What living opportunities are available?
- ★ For what programs does my son or daughter qualify?
- ★ How do I access Supplemental Security Income (SSI), Medicaid Waiver and Vocational Rehabilitation programs?

Develop a strategic life plan to discover the best opportunities for your child!



Contact Debbie Wilkes to discover how to begin the process for your son or daughter.
(214) 207-1038
debbie@drwilkesconsulting.com

